



# East Worlington Parish Hall Newsletter



Edition No 38 [www.eastworlingtonparishhall.btck.co.uk](http://www.eastworlingtonparishhall.btck.co.uk) 11 March 2016

## Parish Hall Conservation and Improvement Project

### Edition 21 - Week Ending 11 March 2016

#### **This Week's Focus**

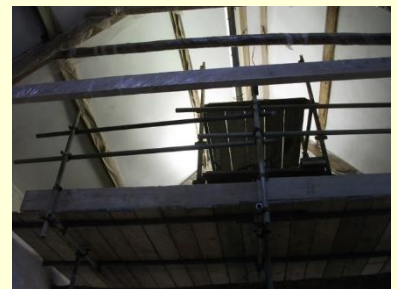
The week has seen continued progress with the thatch at the front of the Hall and inside part of the scaffolding has now been removed and for the first time we can see the full height of the Hall and start to get an impression of the finished look.

#### **Finishing the roof**

With the skimming of the roof complete it was possible to start adding a lime wash finish. Several coats had to be applied to build up the final finish and provide coverage for the whole roof area.



With the whitewash treatment to the roof completed it was possible to lower the scaffolding in the area that will house the new stage. The rest of the Hall still has scaffolding to enable access to the roof for final works to the timbers and to complete the electrical installation.



Supported by

**The National Lottery**<sup>®</sup>  
through the Heritage Lottery Fund



# Parish Hall Conservation and Improvement Project

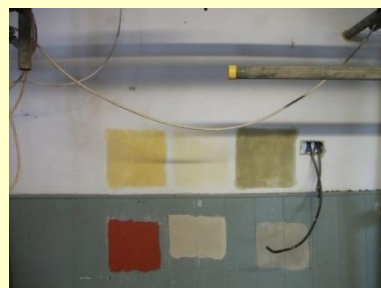
## Hall – floor to roof

With the scaffolding removed it is now possible to see the full height of the Hall and start to have a view of what the Hall will look like when the work is completed.



## Preparing the walls

Work to prepare the woodwork for its final coat of paint was undertaken this week and sample colours were applied to enable the Committee to have a look at comparisons.



## End of the week

By the end of the week work on dismantling unnecessary scaffolding had been completed. Old timber had been taken away by a community volunteer. A metal angle iron was on site. This will form the edge of the new floor to the new stage.



## Key details:

For **bookings** please contact: **Lorna Manton**

**Tel:** 01884 860657

**Email:** [bookings@ewph.uk](mailto:bookings@ewph.uk)

Please contact us to discuss your particular requirements

